



Waverly Hills  
4326 Lee Highway  
Arlington, VA 22207







**T**his charming three bedroom, one bath colonial is conveniently located in Waverly Hills. In addition to having a well proportioned interior floor plan, this property features a den/study, a spacious kitchen with an island, main level hardwood floors, a large living room, a separate dining room, off-street parking for two cars, and a private backyard oasis with a patio, garden, arbor, gardening shed, and pond. This property boasts of expansion and renovation potential with a spacious attic and endless possibilities. Just walking distance to Lee Heights Shops, Cherrydale, and public transportation and only minutes to D.C. Quite possibly the best value in North Arlington! Sold as-is.

**DIRECTIONS:** From Key Bridge: West on Lee Highway to Cherrydale; slight Left to stay on Lee Highway to 4326 Lee Highway (on the left).



Woodstock Park

Lee Heights Shops



Presented by:  
**Billy Buck**  
Buck & Associates, Inc.

Office: 703.528.2288  
Direct: 703.855.2825  
Email: [Billy@BuckRealtors.com](mailto:Billy@BuckRealtors.com)  
[www. BuckRealtors.com](http://www.BuckRealtors.com)



Information is believed to be accurate, but should not be relied upon without verification.

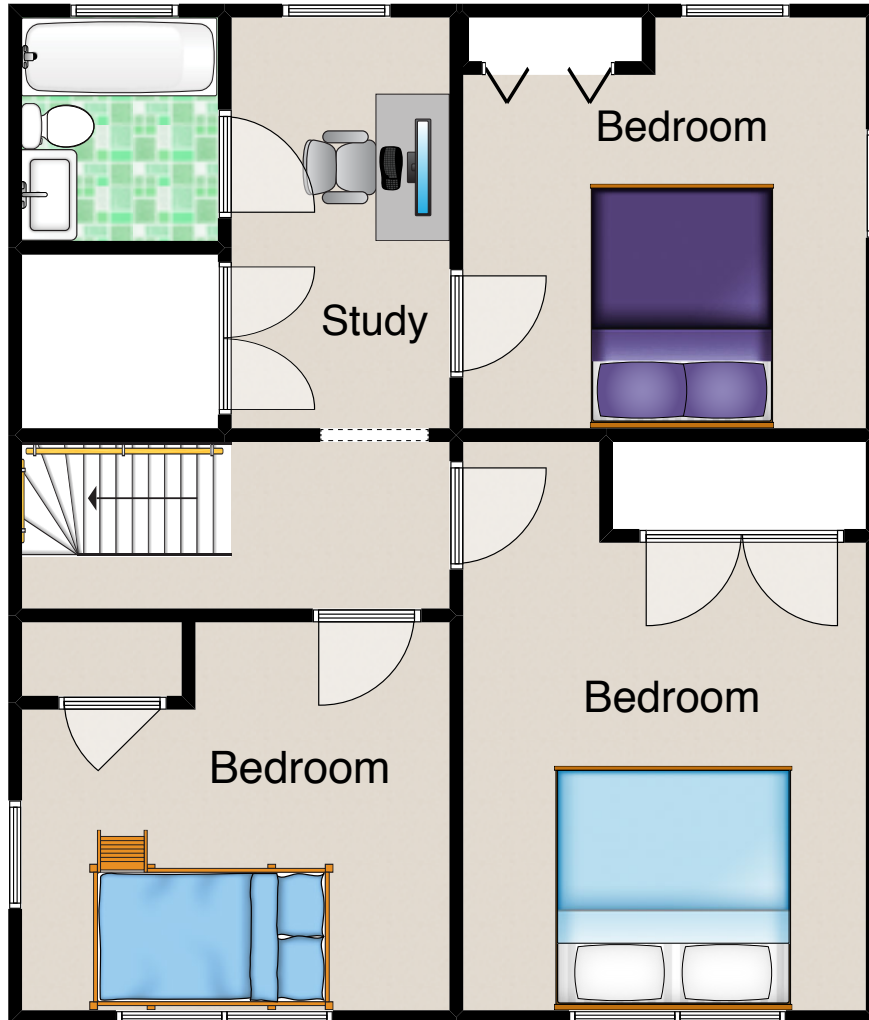


# 4326 Lee Highway



Main Level

# 4326 Lee Highway



Upper Level