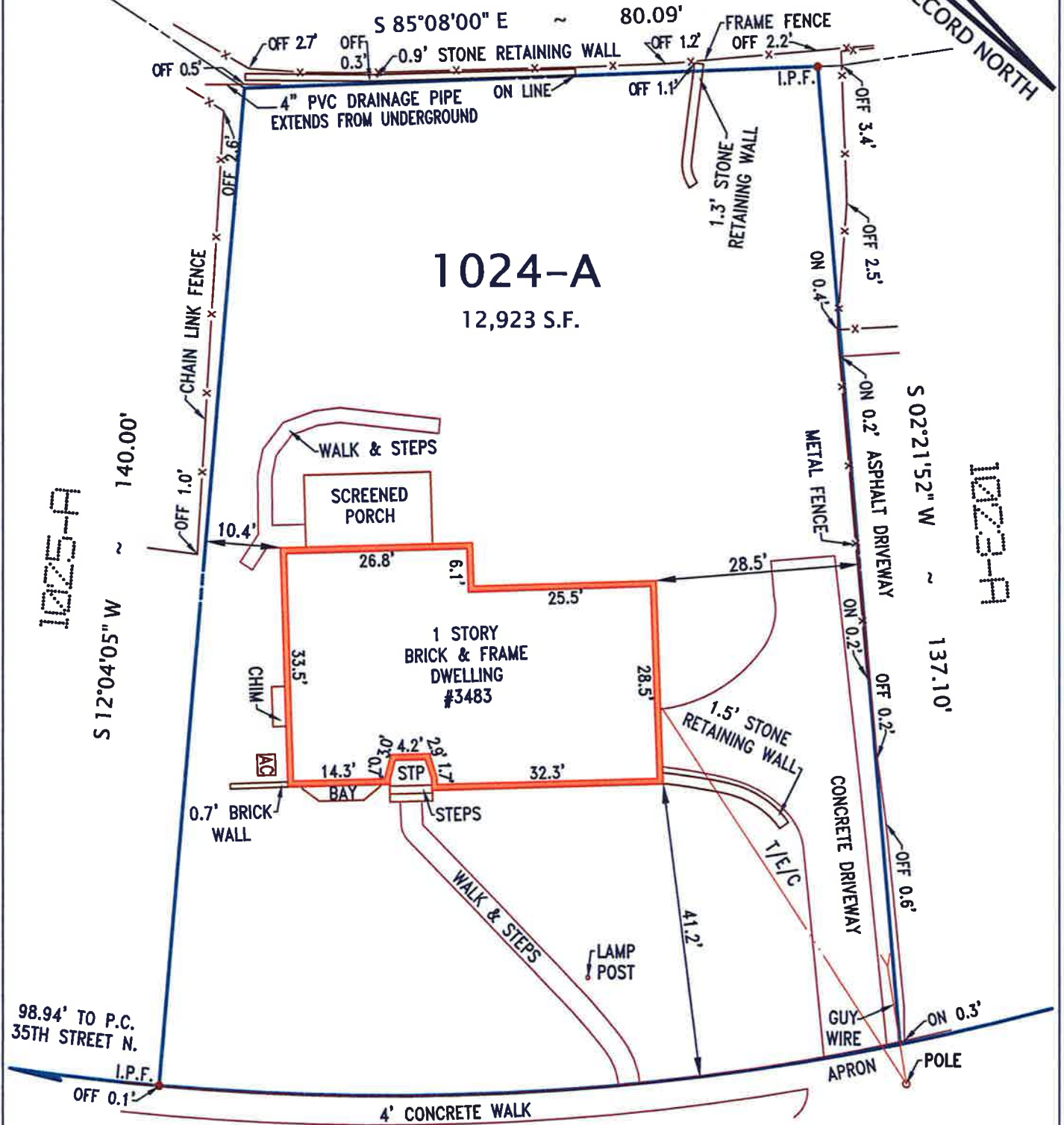


SECTION 11
LOT 1119-A

RECORD NORTH



NORTH VENICE STREET

50' R/W

PLAT

SHOWING HOUSE LOCATION ON
LOT 1024-A SECTION 10

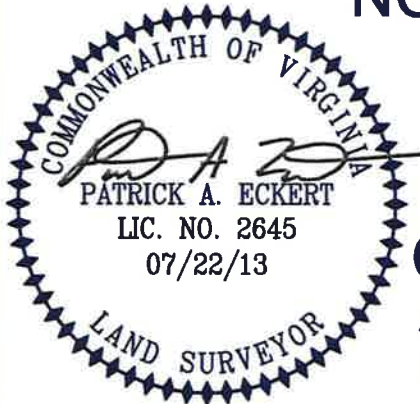
COUNTRY CLUB HILLS

ARLINGTON COUNTY, VIRGINIA

SCALE: 1" = 20' JULY 20, 2013

* NOTICE *

This plat is provided for informational purposes only and is provided AS-IS without warranties. It is not intended to determine the feasibility of specific construction on the property. A title report was not furnished in conjunction with this survey.



PLAT PREPARED WITHOUT THE BENEFIT OF A TITLE REPORT. THIS PLAT IS SUBJECT TO RESTRICTIONS AND EASEMENTS OF RECORD OR ESTABLISHED. NO CORNER MARKERS SET. THE POSITION OF THE EXISTING IMPROVEMENTS HAS BEEN ESTABLISHED BY AN ON SITE INSTRUMENT SURVEY AND UNLESS OTHERWISE SHOWN THERE ARE NO VISIBLE ENCROACHMENTS.

CASE NAME:
HURST
ORDERED BY:
BUCK & ASSOCIATES, INC.

ALTERRA SURVEYS, INC.

11216 WAPLES MILL ROAD #102
FAIRFAX, VIRGINIA 22030
TEL. NO. 703-520-1558
FAX NO. 703-995-4800
INBOX@ALTERRASURVEYS.COM

3483 N. Venice St., Arlington VA 22207



Main Level

The furniture & fixtures shown are for illustration purposes only, dimensions & layout are approximate

3483 N. Venice St., Arlington VA 22207



Lower Level

The furniture & fixtures shown are for illustration purposes only, dimensions & layout are approximate